

Vickery Extension Project CCC

Date: Wednesday, 7 September 2022, 12-2pm

Venue: Gunnedah Town Boardroom and zoom

Attendees	
Community members Grant McIlveen Rob Hooke Narrabri Shire Council Michelle Henry – Strategic Planner Darrell Tiemens – Narrabri Councillor Gunnedah Shire Council Wade Hudson – Senior Development Officer	Whitehaven Coal Mark Stevens – Executive General Manager – Project Delivery Tony Rymer – Vickery Project Manager Marie Bergeron – Group Advisor Environment Scott Mitchell - Group Superintendent Environment Jacki Scott – Manager, Community Investments and Partnerships Guest Jillian Ash – SMEC Independent Chair Professor Roberta Ryan Minute taker Georgia Peters
Apologies Cr Cathy Redding Darren Swain Keith Blanch Barry Thomson Donna Ausling Tony Dwyer	

Item	Description	Action
1	Welcome and introductions	
	RR welcomes everyone to the meeting and asks for introductions. JA is a guest presenter this week who works for SMEC and conducted the Social Impact Assessment (SIA) for the Vickery Extension Project. RR asks for declarations of interest. GMC informed RR via email that he is working for a contractor who works for Whitehaven Coal at Maules Creek and Tarrawonga. No other interests were declared.	

2	Minutes and actions	
	<p>1. Emails with SD about the bridge and certain approvals. RR received a response about ongoing conversations happening with TD. This item is to be carried over to the next meeting although RR is seeking a response in the meanwhile.</p> <p>SM said that TD sends his apologies. The information available to us was shared by TD with the Committee at the last meeting. He believes that is with the DPIE.</p> <p>2. RR to arrange a process for sourcing additional community members for the CCC once Whitehaven has made an investment decision. This is an ongoing item.</p>	
3	Update from Whitehaven	
3.1	Operations update and environmental monitoring – MS & SM	
	<p>MS provides a presentation on the Design Status.</p> <p>MS says regarding timing that they are looking to get the project “shovel ready” by FY 24. There is a lot of work to be done in terms of exploration drilling and detail design.</p> <p>RR asks about the project status. She assumes that the investment commitment has not yet occurred and would like clarification on this.</p> <p>MS says that is correct. They have to complete detail design. They are working with their consultants to get capital costing. The exploration drilling will allow more accurate development of the life of mine planning. This will happen sometime in the next financial year.</p> <p>SM said that while there have been no complaints, a community member has asked about the monitoring. It is a case where the monitoring commences when they start construction.</p> <p>RR asks for questions on the presentation. RR raises a question about the frequency of the meetings and the capacity of the community to provide input.</p> <p>RR remembers that they were going to wait until the investment decision is made. RR flags the balance between wasting people’s time and risking that community input comes in too late with infrequent meetings.</p> <p>MS says that there is a new team working on the project who are more than happy to talk to people in the community about the project.</p>	

	<p>RR suggests that the next meeting take place before Christmas. This will be followed up with DS when he is back at work.</p> <p>MS says, as of a couple of months ago, Whitehaven have set up regular meetings with both Councils and that senior representatives from both Council and Whitehaven will attend. These meetings will cover all of Whitehaven activities in the area.</p>	
4	SMEC presentation – JA	
	<p>JA provides a presentation that has been sent to members of the CCC. It will also be sent out with the minutes.</p> <p>The presentation covers the Social Impact Management Plan (SIMP) – Construction Plan, which SMEC has been commissioned to do.</p> <p>RR asks for questions. She imagines that the community will have particular concerns about the construction phase.</p> <p>RH has heard a rumor that the actual outline of where the rail loop is going to be dramatically changed. Any comment on that?</p> <p>MS stated that the rail loop located adjacent to the CHPP is in the same position. This rail loop is fixed as it is required to be located near the CHPP as this loop is where the trains get loaded with coal, and it remains broadly the same as detailed in the EIS.</p> <p>RH echoes the rail loop question. He was talking to people living around the loop and they are interested in noise monitoring.</p> <p>MS says they are in discussions about putting in noise monitoring measures. They are more than happy to do this once they start construction.</p> <p>GMc asks why there were only 10 days between when they received the email and when submissions were required for the SIMP.</p> <p>RR asks what the best process is for people who are interested in having noise monitoring on their property.</p> <p>MS says to contact DS when he returns, and they can organise it. Work has been done on noise monitoring and the likelihood of their impact. If someone is 5km away, for example, there may be no point in installing noise monitoring there as they will probably not be affected.</p> <p>RR confirms that people should be directed to DS on the noise monitoring questioning.</p>	

	<p>JA addresses the timeframe question. She says that they were unfortunately unable to get the timeframe to match up. The work was commissioned in April, and the previous CCC meeting was in May. At this point they had not developed the draft SIMP.</p> <p>MS notes that commencement of development started in April, with one of the conditions of development being to submit SIMP within a six-month period. When they get closer to construction, they will have to update the SIMP as they will be engaging with contractors who might have ideas that need to be integrated that could improve the SIMP.</p> <p>RR suggests reconsidering the frequency of the meetings.</p> <p>MH enters and introduces herself as the Manager of Planning and Development at Narrabri Council.</p> <p>DT thinks the interesting question about all of this is the temporary workers and permanent workers. How do they create a positive environment in these towns when you don't have people engaged? There is a lot of talk but no success in engaging locals other than heading down to the local pub.</p> <p>RR asks about the ongoing engagement of JA?</p> <p>JA says this is TBD.</p> <p>Once they have had feedback from community and councils, the revised the SIMP will be submitted to DPE for review and feedback. The SIMP will be revised accordingly and then resubmitted to DPE for approval.</p> <p>RR suggests adding social impact as a standing item on the agenda.</p>	
5	AOB	
	<p>DT has heard that there was 12 million dollars' worth of housing approved. Where will this be?</p> <p>MS says it has been announced that this allocation of money will be for housing. Available sites are being explored for the building of additional houses. He notes that currently, housing is in short supply.</p> <p>DT asks who they have been contacting? Council does not know about it.</p> <p>MS says that the person dealing with this is Huw Morgan (GM of Property) from Whitehaven. This housing allowance is managed by operations and is not a project matter. The two senior executives from Whitehaven have met with both councils, and it was on the agenda of the meetings. For Narrabri Council the meeting was set up</p>	

	<p>by Deb Woolfenden and she would know who attended from the Narrabri Council. This meeting with Narrabri occurred on the 31st of August from 10:30am to 11:30am.</p> <p>JS says that meetings were held with NSC to cover early discussions regarding housing.</p> <p>GMc relays a question from the community. There is a gas pipeline from Narrabri to Newcastle that some neighbors say will go through the Vickery Project. They want to know Whitehaven's views on this. Relatedly, what are the safety concerns of having this pipeline through where the coalmine will be?</p> <p>MS confirms that the pipeline does go through Vickery land, but it is quite a distance from coal mine itself. It will go under the rail line. This rail line will be developed keeping in mind that the pipeline is there. It will have to be discussed with Santos, when the pipeline will be built.</p> <p>RR thanks everyone for their attendance and input.</p>	
6	Next meeting	
	TBD – to be discussed with DS.	

Vickery – Canyon Coal Mine

Community Consultative Committee Meeting

Sept 2022



WHITEHAVEN COAL

Canyon Coal Mine

Environmental Monitoring

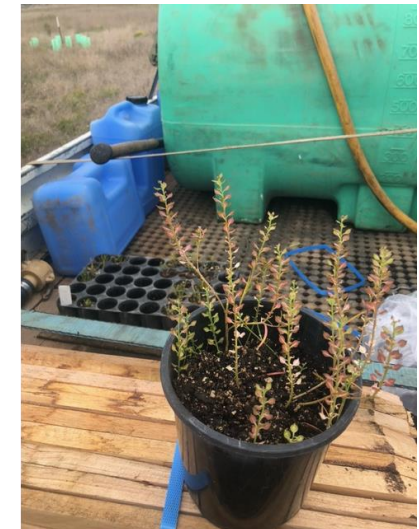
- Biodiversity
- Air quality
- Groundwater
- Surface water



WHITEHAVEN COAL

Biodiversity Management

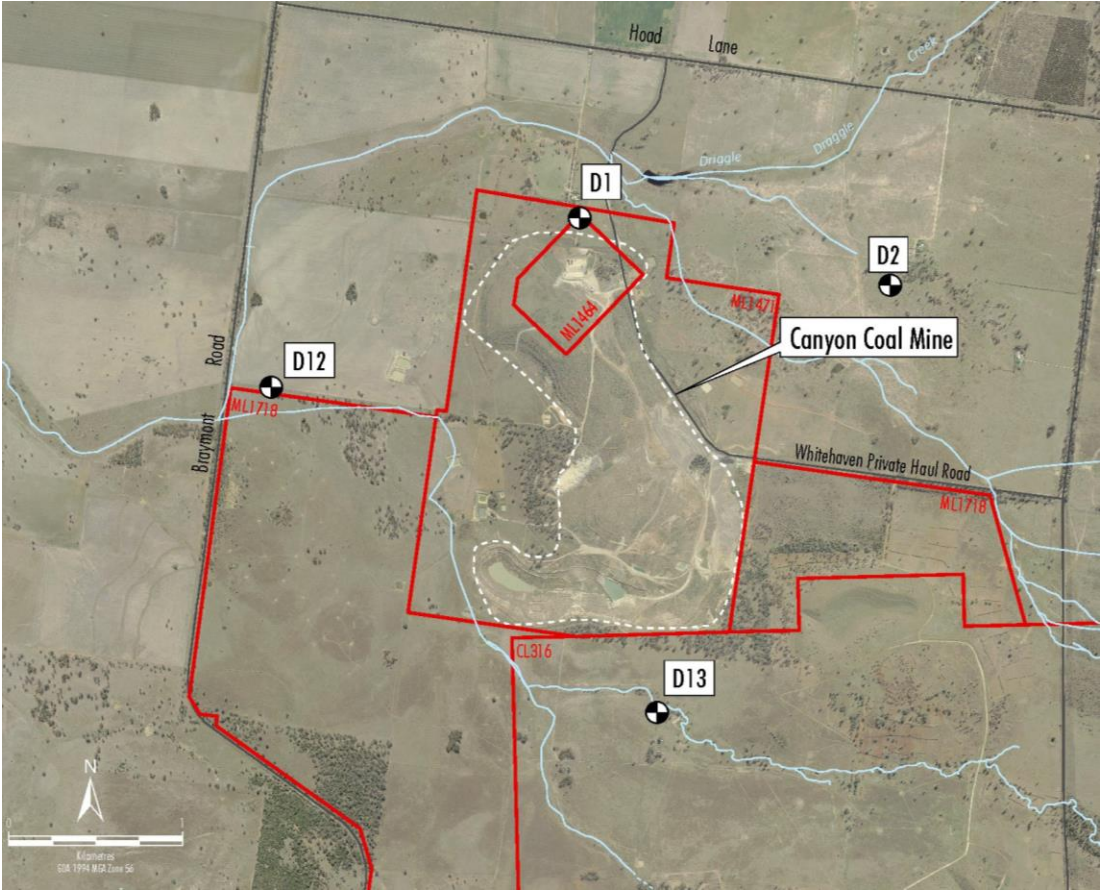
- Winged Peppergrass Threatened Flora Management – A total of 216 seedlings grown from seed collected onsite were planted plus 1,000 seeds were direct seeded all within the Protection Area in September 2021 as part of the Translocation & Restoration Program.
- Pest Animal Monitoring – FY22 Q2 (August to November 2021) indicates that foxes and pigs were in medium to high abundance.
- Pest Animal Management – FY22 Q2 (December 2021) resulted in 58 Foxes baited and 5 Feral Pig trapped on associated Offset properties.
- Pest Animal Monitoring – FY22 Q3 (December 2021 to February 2022) indicates that foxes and pigs were in medium to high abundance.
- Pest Animal Management – FY22 Q3 (March 2022) resulted in 77 Foxes baited and 24 Feral Pig trapped on associated Offset properties.



Air Quality

Depositional Dust Monitoring - Project Approval and Air Quality Management Plan

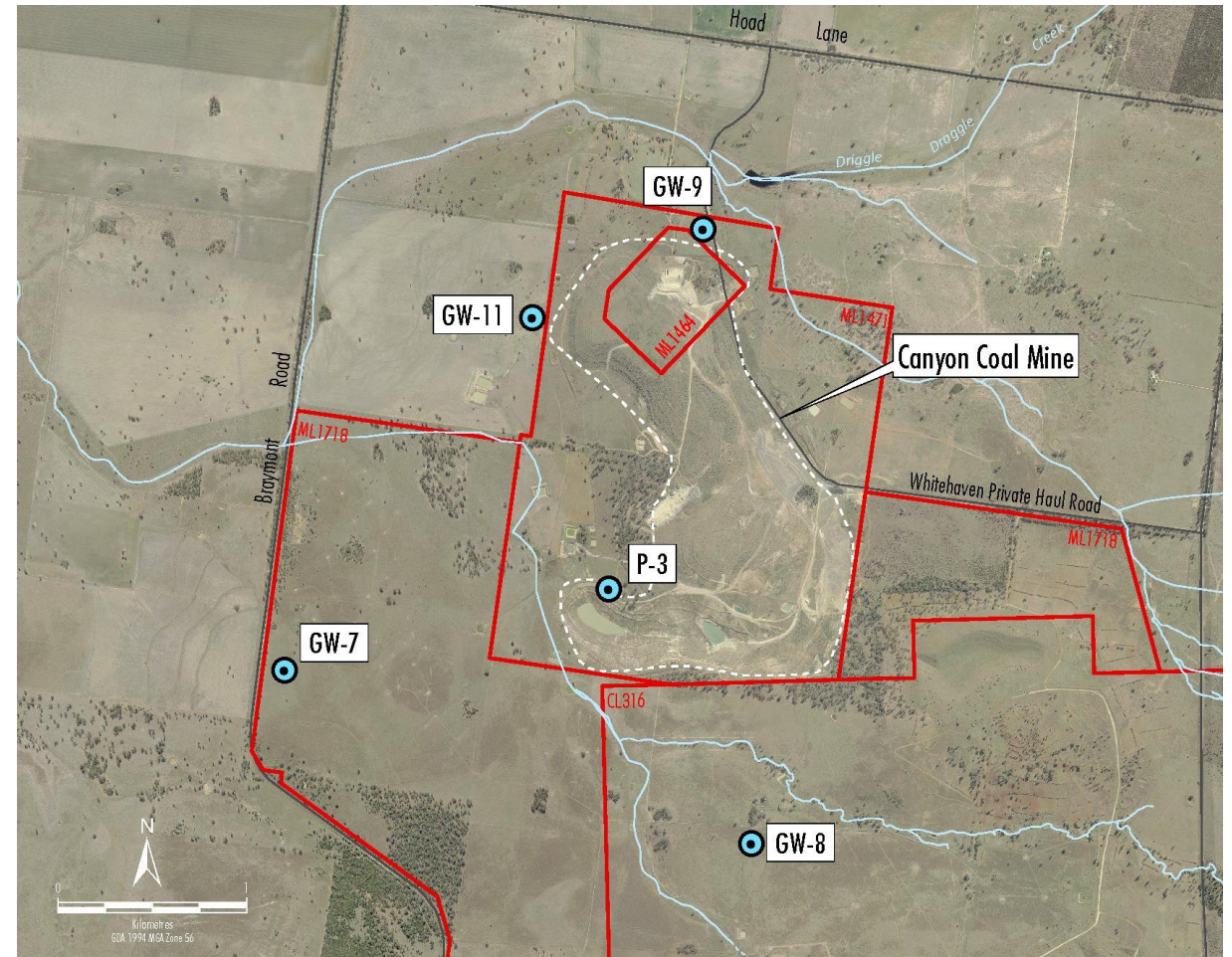
Depositional Dust (12-month insoluble matter results in g/m2/month)		
Site	Annual Average	Guideline
D1	1.15	Annual average to be below 4
D2	1.41	
D12	2.00	
D13	2.99	



Groundwater

Monitoring as per Project Approval and Water Management Plan

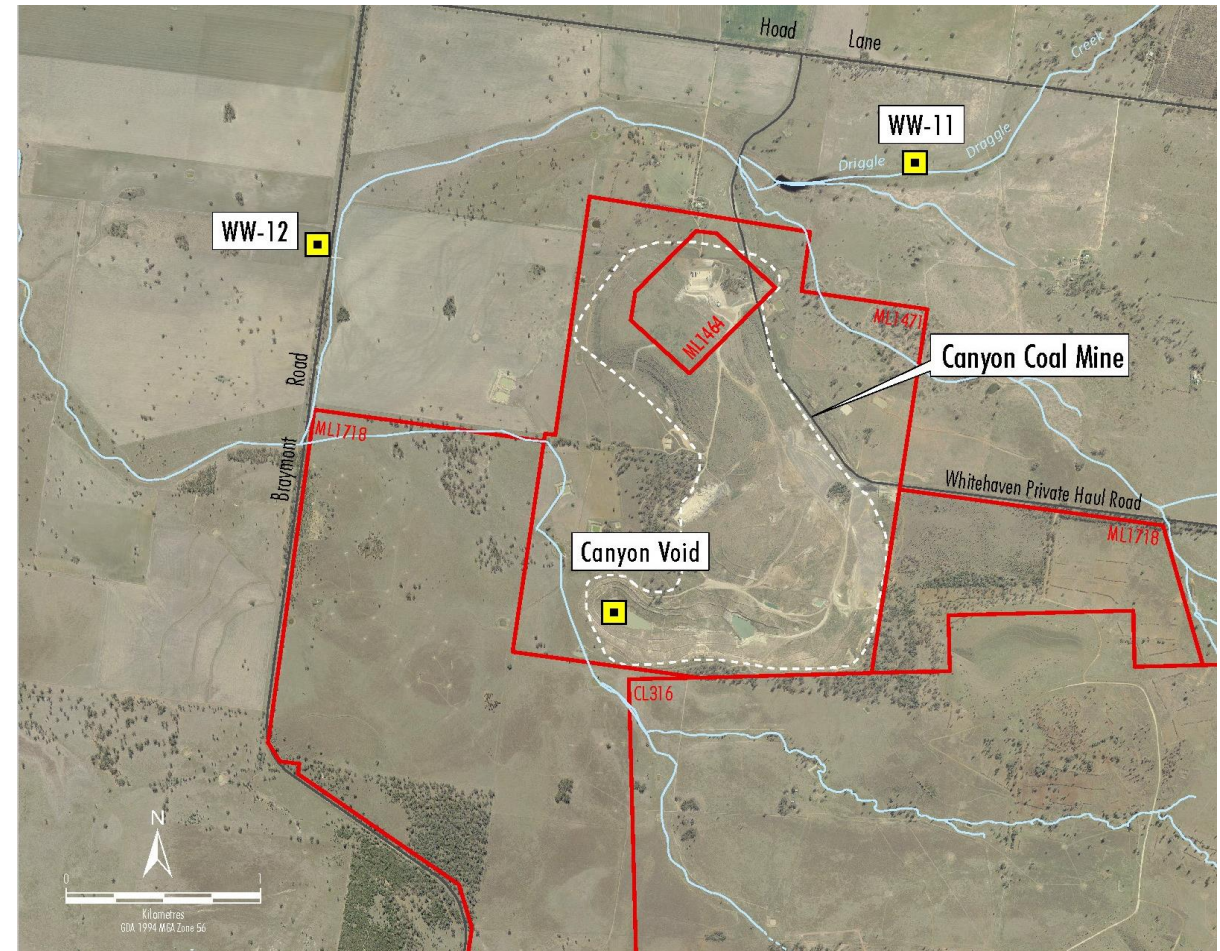
- All sites standing water level monitored approximately every 6 months.
- Sites GW-11 and P-3 have water quality assessed every six months to review temporal trends.
- Monitoring has not been scheduled since the last CCC Meeting.



Surface Water

Monitoring as per Project Approval and Water Management Plan

- On average, the site received 56.2 mm of rain each month since the last CCC meeting. The highest rainfall was in March with 101.4 mm at the site weather station.
- No monitoring was undertaken as no discharge occurred.
- Canyon Void water levels and quality are monitored on a 6 monthly basis. Monitoring has not been scheduled since the last CCC Meeting.



Complaints


No complaints received


<https://whitehavencoal.com.au/our-business/our-assets/canyon-mine/>

Contacts

Canyon Mine

Contact us via our community hotline or email for more information, to provide feedback or to lodge a complaint.

 1800 WHAVEN (1800 942 836)

 CANYONPROJECT@WHITEHAVENCOAL.COM.AU

Vickery Coal Mine

Design status

Secondary Approval Status

Environmental Monitoring

- Biodiversity
- Air quality
- Groundwater
- Surface water

Community

Social Impact Management Plan



WHITEHAVEN COAL

Design Status

Approval Conditions:

- Notification provided to DPE on 31 March of plan to 'commence development'.
- Commencement of development occurred on 28 April 2022

Update on CHPP:

- Coal Preparation Plant is fully engineered.
- Completed Detailed Feasibility Study engineering for the materials handling system (crushing, conveyors, bins and transfers).

Update on MIA:

- Completed Detailed Feasibility Study engineering for the Mine Infrastructure Area (MIA).

Update on Rail:

- Completed Detailed Feasibility Study engineering for the Rail.
- Working closely with ARTC for Mainline connection and Signaling design.
- Ready to commence discussions with TfNSW for Kamlaroi Highway bridge works.

Design Status

Geotechnical investigation works:

- Started on 28th April 2022 and first phase completed July 22.
- Pre geotech works include:
 - Ecology & Culture Heritage walk downs;
 - Survey / Fencing works;
- Scope of geotech works increased to approximately 300 test locations comprising of test pits, boreholes and CPT's (Cone Penetration Tests).
- As of 23rd August approx. 200 test locations (113 test pits, 24 CPT's and 54 boreholes) completed and reinstated including ARTC Mainline and Kamilaroi Highway testing works completed.

Exploration Drilling Program works:

- Started on 3rd April 2022 and phase 1 completion August 22.
- Scope of works includes 49 boreholes ranging in depth from 90m to 250m.
- As of 23rd August 2022 47 holes have been drilled or are in progress.
- Phase 2 commencing August 22 through to December 22.



Secondary Approval Status

Update on Approvals – Specifically Named Management Plans:

Environmental Management Plan		Status	Approved prior to	
Environmental Management Strategy	EMS	Approved	Construction	
Blast Management Plan	BIMP	Approved	Any blasting	
Waste Management Plan	WMP	Approved	Construction	
Aboriginal Cultural Heritage Management Plan	ACHMP	Approved	Construction	
Historic Heritage Management Plan	HHMP	Approved	Construction	
Koala Management Plan	KPoM	Approved	Construction	
Noise Management Plan	NMP	Approved	Construction	
Bushfire Management Plan	BuMP	Approved	Operations	
Traffic Management Plan	TMP	Feedback from TfNSW required by DPE received.	Construction	
Biodiversity Management Plan	BoMP	Addressing further DPE minor comment	Construction	
Air Quality & Green House Gases Management Plan	AQGGMP	Approved	Construction	
Water Management Plan	WMP	Review commenced.	Construction	

Reporting and Compliance Summary

- The Annual Review report for calendar year 2021 was submitted to DPE and other regulatory agencies as required by the Project Approval (SSD 5000). A copy is available on the Whitehaven Coal website, or via hard copy on request.
- An Exploration Mining Operation Plan (EMOP), required under CL316, was submitted to the NSW Resources Regulator in November 2021 and approved in January 2022 for exploration drilling activity.
- The VCM assisted the Resources Regulator in their review of the previously mentioned historical bore holes incomplete rehabilitation. Rehabilitation has been completed at the outstanding boreholes.

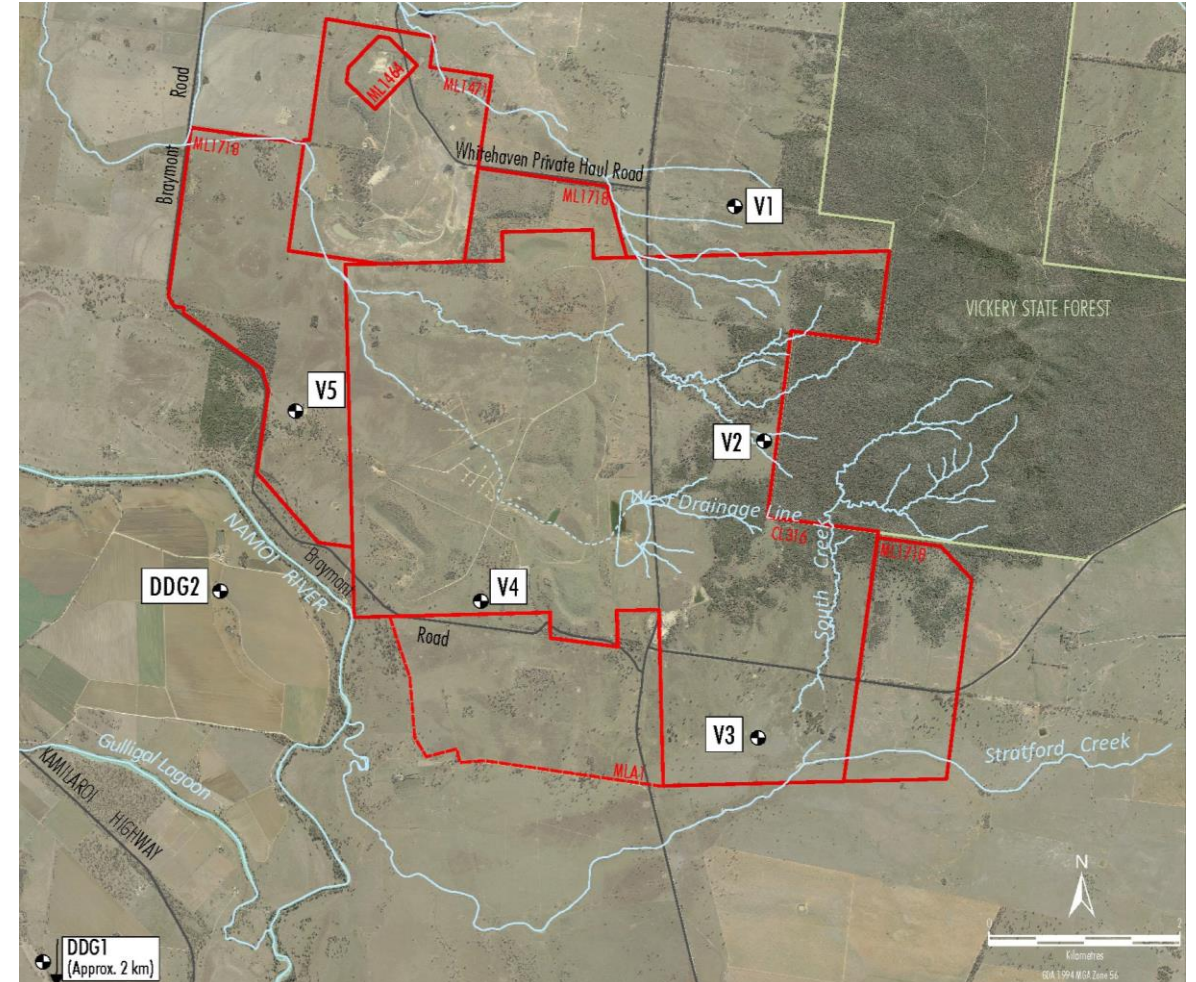
Air Quality

Depositional Dust monitoring as per Project Approval

Depositional Dust (12-month insoluble matter results in g/m2/month)		
Site	Annual Average	Guideline
DG1	2.75	Annual average to be below 4
DG2	2.01	
V1	4.47	
V2	1.23	
V3	2.58	
V4	0.83	
V5	2.20	

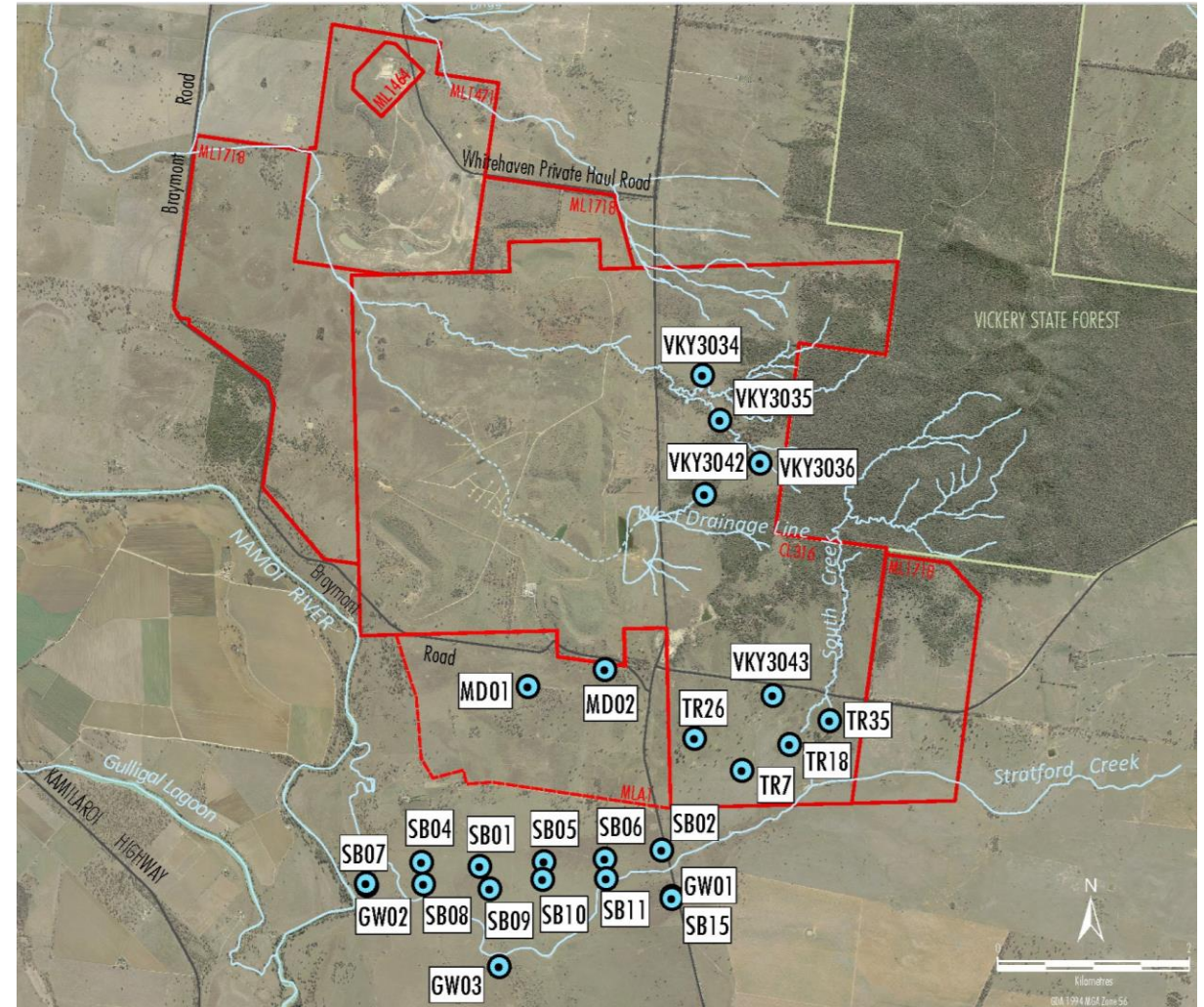
Dust emissions are not a result of the development.

- V1 results affected by bird droppings accumulating in the gauge.



Groundwater

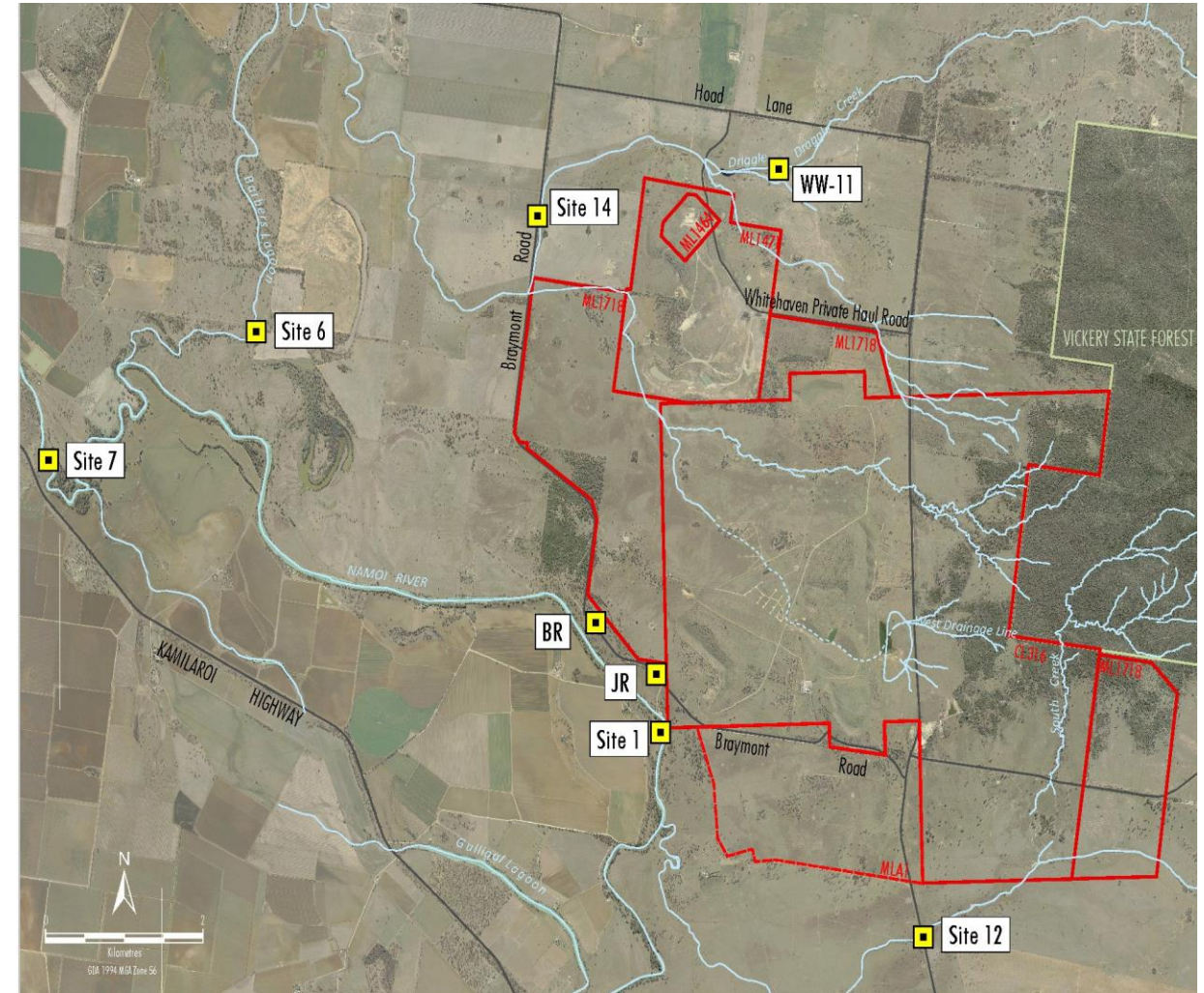
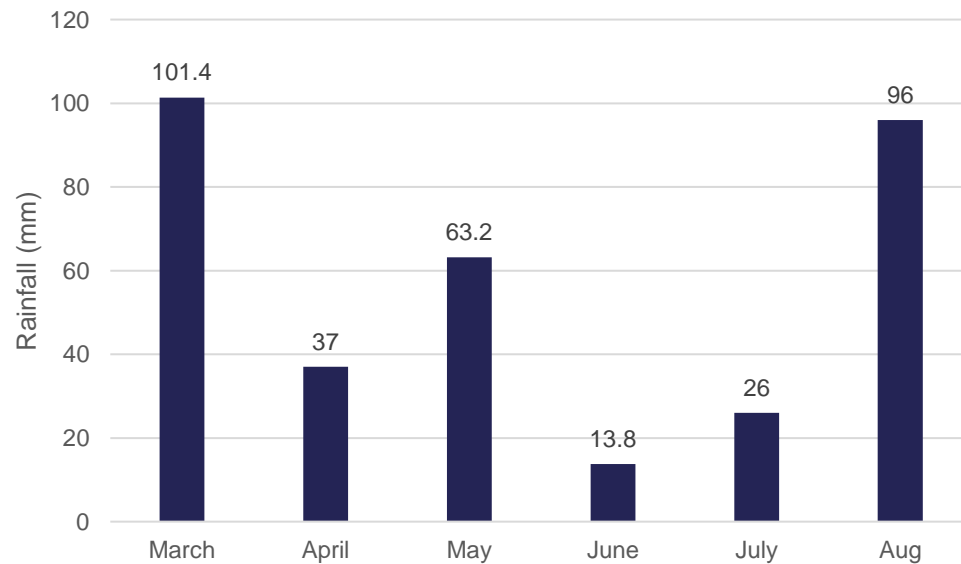
- Groundwater levels at 25 standpipe locations are monitored approximately every six months. Monitoring was last undertaken in April 2022.
- Monitoring has not been scheduled since the last CCC Meeting.



Surface Water

- Surface water flow occurred since the last CCC meeting through a number of rain events.
- Water sampling undertaken in the Namoi River.

Rainfall - March 2022 to August 2022



Complaints


No complaints received. A local Landholder however was concerned environmental monitoring is not currently in place for the pre-construction geotech works for the Project. These works are minor in nature and short in duration and are separate to the Construction works which are more significant in nature and longer in duration and require formal monitoring in accordance with the approved Noise Management Plan.


<https://whitehavencoal.com.au/our-business/our-assets/vickery-extension-project/>

Contacts

Vickery Extension Project

Contact us via email or our community hotline for more information, to provide feedback or to lodge a complaint.

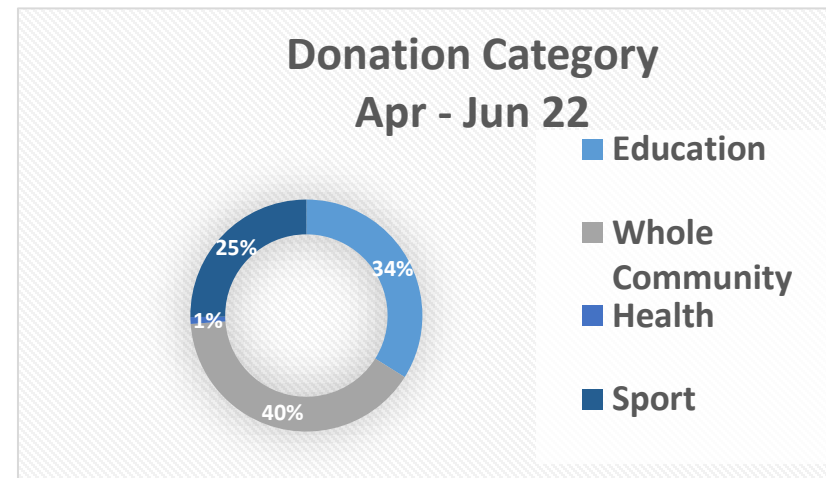
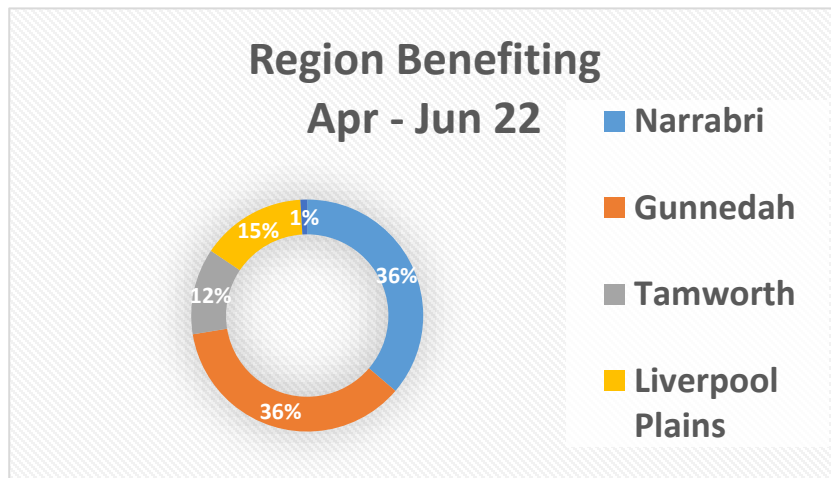
 1800 WHAVEN (1800 942 836)

 VICKERYFEEDBACK@WHITEHAVENCOAL.COM.AU

ALL CONTACTS →

Community

- Whitehaven continues to support the local Community with donations and sponsorships.
- More information on Sponsorships and Donations can be found at:
 - <https://whitehavencoal.com.au/sustainability/community/donations-sponsorships/>
- Donations for April – July 2022 almost \$129,000 spent in the local community.
- Highlights - Painting of the David Taylor Building Quirindi, Narrabri Show, Purchased 10 new student laptops and charging stations for Boggabri Public School, Gunnedah High School Student NAIDOC shirts, Gunnedah and Narrabri Meals on wheels purchase of equipment and many others.



Vickery Construction Social Impact Management Plan (SIMP)

- Draft Social Impact Management Plan has been sent to CCC members for review and comment
- No comment received by CCC members at this stage
- Draft SIMP finalised for submission within timeframes as required by SMEC

Thank you

www.whitehavencoal.com.au